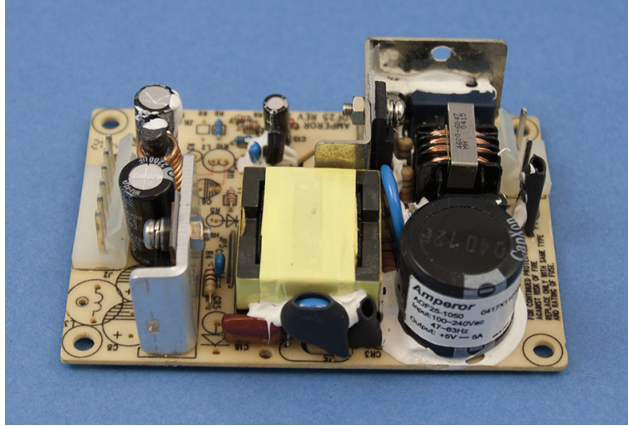


AOF25 Series

Single or Multi Output Channels, 25W
Open Frame Power Supply



Features and Applications:

- AC-to-DC Switch Mode Power Supply
- Accept Universal AC Input
- Single or Multi Output Channel Options Available
- Industry Standard 3.6x2.5x1.15" Package for 1U Applications
- OVP / OCP / OTP / Short Circuit Protection
- cUL Report Available

All specifications are typical at nominal input, full load, at 25°C unless otherwise stated.

Electrical Specifications

INPUT

Input Voltage Range	90 - 264Vac, (Rated 100 - 240Vac)
Input Frequency	47 - 63Hz
Input Current	Max. 1.0A@90Vac, Full load
Inrush Current	Max. 25A @120Vac Cold Start
Leakage Current	0.2mA@120Vac, 0.4mA@230Vac

OUTPUT

Max. Load	25W Continuous 30W w 15CFM Air-flow
Output Regulation	5%
Ripple & Noise	1% Vout at 20MHz
Efficiency	75% typical.
Hold-up Time	>18ms @ Full Load, 120Vac >24ms @ Full Load, 230Vac
Protection Circuitry	Shutdown & Auto Recovery
Power On Time	< 2 sec.

General Specifications

Warranty Info / MTBF	Contact Amperor for detailed warranty and MTBF information
Dimension	91.44mm x 63.50mm x 25.50mm 3.6" x 2.5" x 1.15"

Environmental Specifications

Operating Temp.	-20°C ~ 70°C
Temp. De-rating	40°C to +70°C
Storage Temp.	-20°C to +80°C
Relative Humidity	5% to 95% (non-Condensing)
Vibration	2.5G rms peak, 5 ~ 500Hz
Shock	40G Peak
Cooling	Convection
RoHS	Compliant



EMC

Conducted Emissions	EN55011, FCC part 15 level B
Radiated Emissions	EN55022, FCC part 15 level B

Safety Certifications

cUL UL60950-1: 2003 1st edition

Amperor Inc.
11320 Neeshaw Dr.
Houston, TX 77065
1-281-807-3320
<http://www.amperor.com>

Amperor Adelmann GmbH
Hanns-Martin-Schleyer- Strasse 30,
47877 Willich, Germany
+ 49 2154 8168900

Intertek Corp., an Amperor Company
4th, Fl, Far East World Center
Xintai 5th Rd., Xizhi Dist.,
New Taipei City, 22101, Taiwan R.O.C.
886-2-2698-2239

AOF25 Series

Single or Multi Output Channels, 25W
Open Frame Power Supply



Output Specifications

Model	Output #1	Output #2	Output #3	Pin 1	Pin 2,3	Pin 4	Pin 5	Pin 6
AOF25-1030	+3.3V @ 7A			NC	RTN	+3.3V	+3.3V	NC
AOF25-1050	+5V @ 5A			NC	RTN	+5V	+5V	NC
AOF25-1090	+9V @ 2.8A			NC	RTN	+9V	+9V	NC
AOF25-1120	+12V @ 2.1A			NC	RTN	+12V	+12V	NC
AOF25-1135	+13.5V @ 1.9A			NC	RTN	+13.5V	+13.5V	NC
AOF25-1150	+15V @ 1.7A			NC	RTN	+15V	+15V	NC
AOF25-1165	+16.5V @ 1.5A			NC	RTN	+16.5V	+16.5V	NC
AOF25-1180	+18V @ 1.4A			NC	RTN	+18V	+18V	NC
AOF25-1240	+24V @ 1.1A			NC	RTN	+24V	+24V	NC
AOF25-2010	+5V @ 2.5A	+12V @ 1A		+12V	RTN	+5V	+5V	NC
AOF25-2020	+5V @ 2A	+15V @ 1A		+15V	RTN	+5V	+5V	NC
AOF25-2030	+5V @ 2A	-5V @ 2A		-5V	RTN	+5V	+5V	NC
AOF25-2040	+5V @ 2.5A	-12V @ 1A		NC	RTN	+5V	+5V	-12V
AOF25-2050	+5V @ 2A	+24V @ 0.6A		+24V	RTN	+5V	+5V	NC
AOF25-2060	+15V @ 0.8A	-15V @ 0.8A		-15V	RTN	+15V	+15V	NC
AOF25-2070	+5V @ 3A	+12V @ 0.5A		+12V	RTN	+5V	+5V	NC
AOF25-2080	+12V @ 1A	+24V @ 0.5A		+24V	RTN	+12V	+12V	NC
AOF25-3010	+5V @ 3A	+12V @ 0.5A	-12V @ 0.2A	+12V	RTN	+5V	+5V	-12V
AOF25-3020	+5V @ 3A	+12V @ 0.5A	-5V @ 0.2A	+12V	RTN	+5V	+5V	-5V
AOF25-3030	+5V @ 3A	+12V @ 1A	-12V @ 0.3A	+12V	RTN	+5V	+5V	-12V
AOF25-3040	+5V @ 2A	+12V @ 1A	-5V @ 0.3A	+12V	RTN	+5V	+5V	-5V
AOF25-3050	+5V @ 2A	+24V @ 0.5A	-12V @ 0.4A	+24V	RTN	+5V	+5V	-12V
AOF25-3060	+5V @ 2A	+24V @ 0.5A	-5V @ 0.4A	+24V	RTN	+5V	+5V	-5V
AOF25-3070	+5V @ 2A	+15V @ 0.8A	-12V @ 0.5A	+15V	RTN	+5V	+5V	-12V
AOF25-3080	+5V @ 2A	+15V @ 0.8A	-5V @ 0.5A	+15V	RTN	+5V	+5V	-5V

Amperor Inc.
11320 Neeshaw Dr.
Houston, TX 77065
1-281-807-3320
<http://www.amperor.com>

Amperor Adelman GmbH
Hanns-Martin-Schleyer- Strasse 30,
47877 Willich, Germany
+ 49 2154 8168900

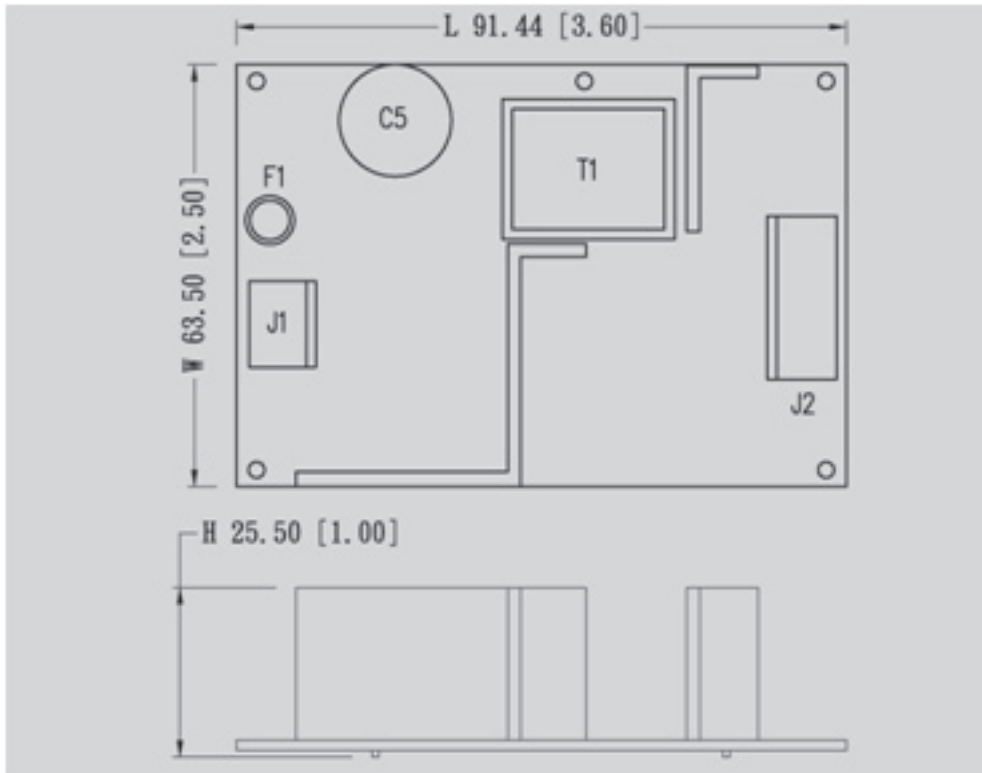
Intertek Corp., an Amperor Company
4th, Fl, Far East World Center
Xintai 5th Rd., Xizhi Dist.,
New Taipei City, 22101, Taiwan R.O.C.
886-2-2698-2239

AOF25 Series

Single or Multi Output Channels, 25W
Open Frame Power Supply



Mechanical Drawing



Airflow vs. Output Power De-Rating Curve

