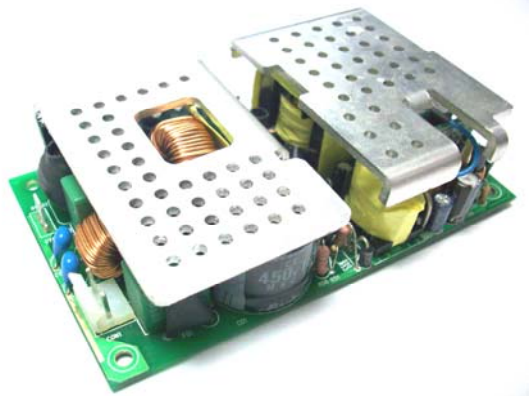


AOF150H Series

Single Output High Density & High Efficiency Power Supply



Features and Applications:

- 100W Max With 20CFM Airflow Cooling For AOF150H-033/05
- 150W Max With 20CFM Airflow Cooling For AOF150H-12
- 180W Max With 20CFM Airflow Cooling For AOF150H-24/48
- AC/DC Universal Input Switch Mode Power Supply
- Industry Standard 3.0x5.0x1.3 Inch Package (1U applications)
- 5V Standby & 12V Fan Outputs
- Remote On/Off
- Power Good Signal
- Power Factor Correction (PFC) Meets EN61000-3-2
- OVP,OCP,OTP and Short Circuit Protection
- EMI Compliance - EN55022-B, FCC Part 15 Class B
- Safety Approvals - cUL,TUV,CE,CB Report

All specifications are typical at nominal input, full load, at 25 °C unless otherwise stated.

Electrical Specs		General	
INPUT		Isolation Voltage	Input 3000VAC 4242VDC
Input Range	90 ~ 264VAC, full range	Switching Freq.	70KHz, ±5KHz Fixed
Frequency Range	47 ~ 63 Hz	Weight	500g(17.65z) max.
Efficiency	See table 1	Warranty Info	1 year
Input Current	3.5A rms @ 100VAC, full load	MTBF	150,000 hours min. @25C, 80% load
Inrush Current	60A max. @ 115VAC, cold start 120A max. @ 230VAC, cold start	Environmental	
Leakage Current	1.75 mA max.	Operating Temp.	-20°C to 70°C
Input Fuse	5.0A, 250VAC	Storage Temp.	-40°C to 85°C
OUTPUT		Relative Humidity	5% to 95% Non-condensing
Maximum Power	See the table 1 and table 2	Altitude	Operating 10,000 ft max. Non-operating 50,000 ft max.
Minimum Load Operation	0A	Vibration	2.4G rms peak, 5Hz ~ 500Hz
Load Regulation	±2%	Shock	40G peak
Line Regulation	±1% max.	RoHS	Compliant
Ripple & Noise	1% of Vo at 20M Hz	EMC	
Power On Time	2s max. at turn on	Conducted Emissions	EN55022, FCC part 15 level B
Hold-up Time	> 10ms@ full load,115AC	Radiated Emissions	EN55022, FCC part 15 level A
OCP Protection	150% Iout max.	Harmonic Currents	EN61000-3-2, class D
OVP Protection	150% Vout max.	Voltage Flicker	EN61000-3-3
OTP Protection	120°C max.	Dips & Interruptions	EN61000-4-11, 30% 10 ms, 60% 100 ms, 100% 5000 ms
Short Circuit Protection	Restart	Conducted Immunity	EN61000-4-6, 10 Vrms, Perf Criteria A
Temperature Derating	+50 °C ~ +70 °C decrease 2.5% / °C See table 2	EFT/Burst	EN61000-4-4, level 3 Perf Criteria B
Power Good Signal	5V ±10%	Safety (pending approval)	
Remote On/Off	Yes	cUL	UL60950-1: 2003, First Edition
12V Fan Output	12V ±10% 0.35A max.	CE	EN55024, EN55022, EN61000
5V Aux (standby)	5V ±5% 0.1A min and 0.5A max.	TUV	EN60950-1

Amperor Inc.
11320 Neeshaw Dr.,
Houston, TX 77065
1-281-807-3320
http://www.amperor.com

Amperor Europe Ltd
30 Ballot Road
Irvine KA12 OHW Scotland U.K
44-(0)-1294-272400

Intertek Corp, an Amperor Company
4th, Fl, Far East World Centre
Hsin Tai Wu Road, Hsin-Chih, Taipei, Taiwan R.O.C
886-2-2698-2239



AOF150H Series

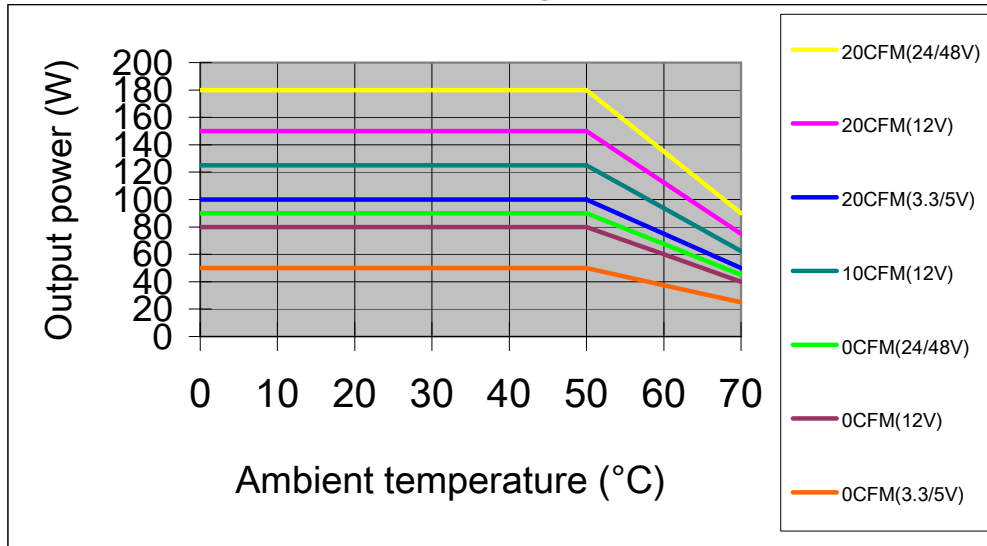
Single Output Power Supply



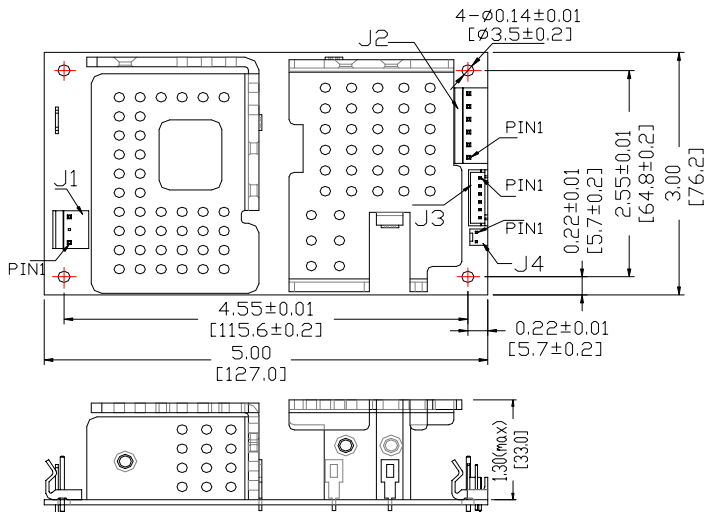
Table1 AOF150H Series Model Output Specifications(230V)

MODEL	OUTPUT VOLTAGE	OUTPUT CURRENT Max	%EFF. TYPICAL	RIPPLE & NOISE	LOAD REGULATION	OUTPUT VOLTAGE RANGE
AOF150H-033	+3.3V	30.30A	72	50mV	±2%	±5%
AOF150H-05	+5V	20.00A	76	50mV	±2%	±5%
AOF150H-12	+12V	12.50A	84	120mV	±2%	±5%
AOF150H-24	+24V	7.5A	86	240mv	±2%	±5%
AOF150H-48	+48V	3.75A	88	480mv	±2%	±5%

Table 2 Derating Curve



Mechanical Information



J1	AC INPUT CONNECTOR
PIN 1	NEUTRAL
PIN 2	NO PIN
PIN 3	LINE

J4	Fan Power CONNECTOR
PIN 1	+12V RTN
PIN 2	+12V

J2	DC OUTPUT CONNECTOR
PIN 1	+V
PIN 2	+V
PIN 3	+V
PIN 4	RTN
PIN 5	RTN
PIN 6	RTN

J3	SIGNAL CONNECTOR
PIN 1	REMOTE ON/OFF
PIN 2	-SENSE
PIN 3	+SENSE
PIN 4	Spare PIN
PIN 5	POWER GOOD
PIN 6	5Vaux

Notes:

- 1.All dimensions in unit inches[mm].
- 2.□ther tolerance: ±0.02[±0.5]
- 3.Detailed mechanical drawing upon request.

Note:

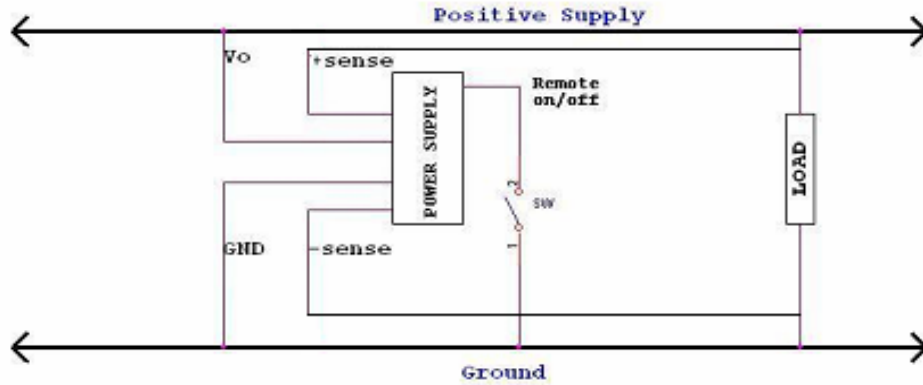
- 1.The Power Off when the remote On/Off connect to ground .
- 2.The Power On when the remote On/Off connect to High signal or open .

AOF150H Series

Single Output Power Supply



1. Power Supply Connection Figure



2. Timing/Housekeeping/Control

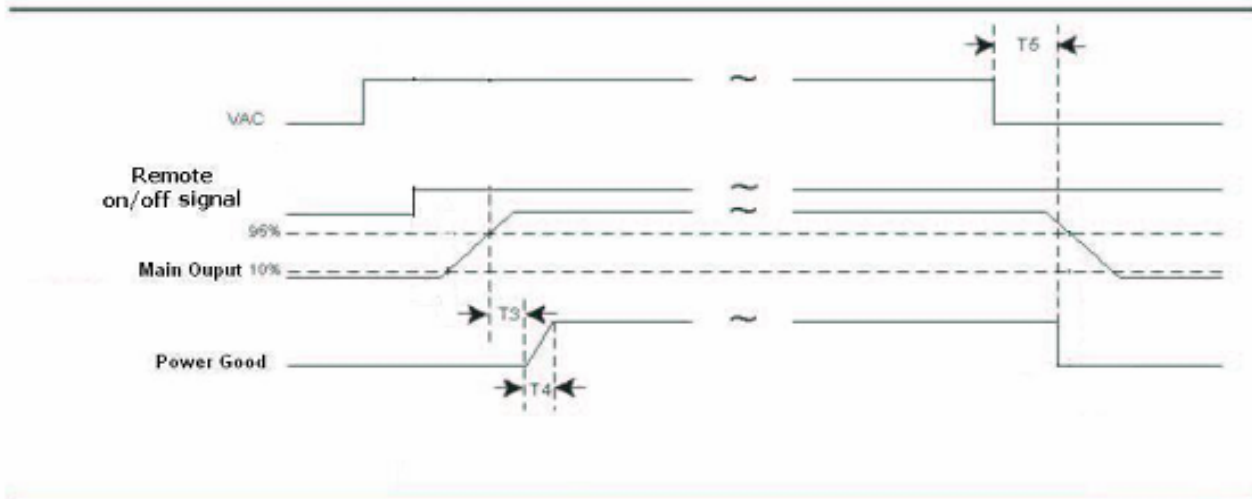


Table1 : Power good Signal Characteristics

Signal Type	+5 V TTL compatible
Logic level low	< 0.4 V while sinking 4 mA
Logic level high	Between 2.4 V and 5 V output while sourcing 200 μ A
Power Good delay	100 ms < T_3 < 500 ms
Power Good rise time	$T_4 \leq 10$ ms
AC loss to power good hold-up time	$T_5 \geq 10$ ms